



INDOFINE Chemical Company, Inc.

121 Stryker Lane, Bldg. 30, Suite 1 • Hillsborough, NJ 08844 • U.S.A.

Phone: (908) 359-6778 • FAX: (908) 359-1179

website: www.indofinechemical.com

e-mail: chemical@indofinechemical.com

CERTIFICATE OF ANALYSIS

Catalog Number: 19-813

Product Name: **2,5-DIMETHOXY-2'-HYDROXYCHALCONE**

Lot Number: 1611927

CAS Number: [32272-23-4]

Chemical Formula: C₁₇H₁₆O₄

Molecular Weight: 284.32

Melting Point: 96-98°C

Appearance: Yellow powder

Moisture(KF): 0.31%

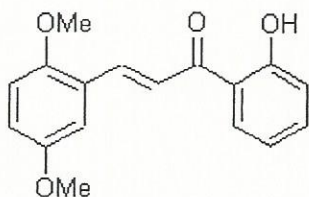
TLC: Hexane: Ethyl acetate (1:1)

Solubility: Soluble in Chloroform

NMR Spectrum: Enclosed (Conforms to the structure)

Storage: Store in a cool, dry place.

Purity(HPLC): 99.25%





INDOFINE Chemical Company, Inc.

121 Stryker Lane, Bldg. 30, Suite 1 • Hillsborough, NJ 08844 • U.S.A.

Phone: (908) 359-6778 • FAX: (908) 359-1179

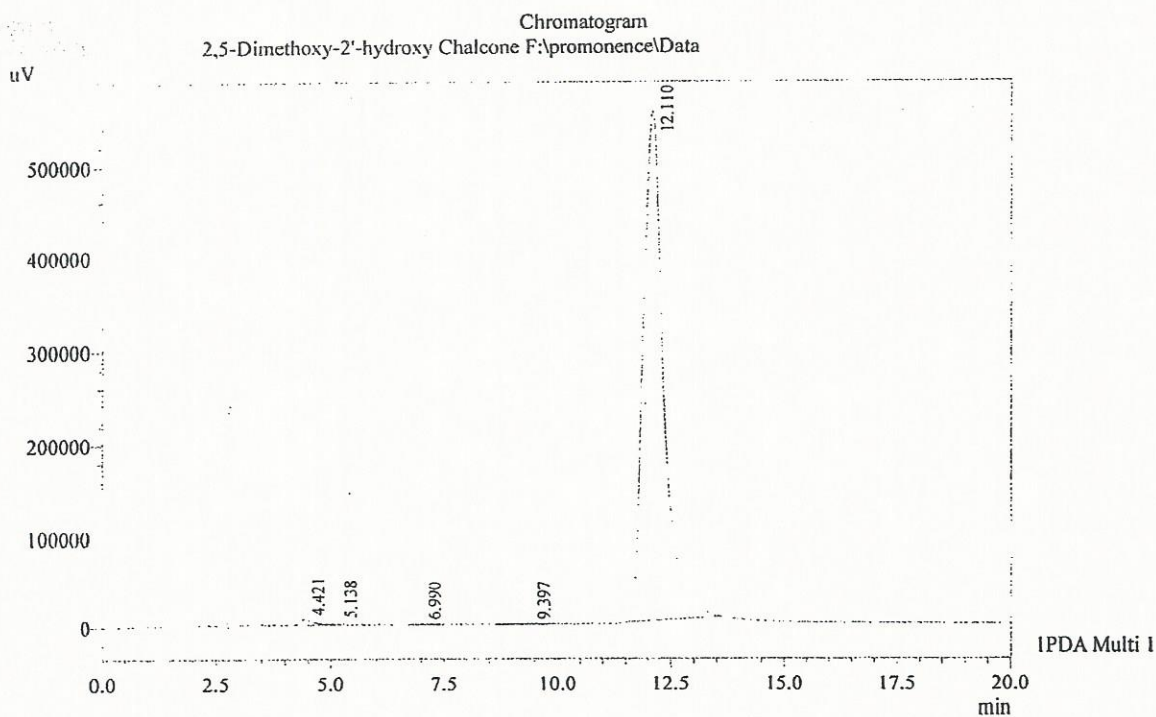
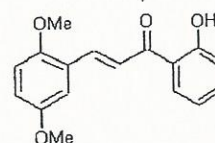
website: www.indofinechemical.com

e-mail: chemical@indofinechemical.com

HPLC ANALYSIS

Acquired by : Admin
 Sample Name : 2,5-Dimethoxy-2'-hydroxy Chalcone
 Sample ID : #0409048
 Injection Volume : 1 uL
 Data Filename : 031016D.lcd
 Method Filename : Isocratic Method.lcm
 Report Filename : Default.lcr

Catalog No.: 19-813
 Product Name: 2,5-Dimethoxy-2'-hydroxychalcone
 Lot No.: 1611927



I PDA Multi 1 / 210nm 4nm

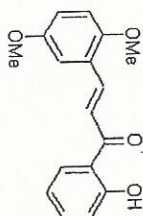
PeakTable

PDA Ch1 210nm 4nm

Peak#	Name	Ret. Time	Area	Area %	Relative Retention Time
1	RT:4.421	4.421	106865	0.62	0.00
2	RT:5.138	5.138	2861	0.02	0.00
3	RT:6.990	6.990	8734	0.05	0.00
4	RT:9.397	9.397	10005	0.06	0.00
5	RT:12.110	12.110	17072993	99.25	0.00
Total			17201458	100.00	



INDOFINE Chemical Company, Inc.
 121 STRYKER LANE
 BLDG. 30, SUITE 1
 HILLSBOROUGH, NJ 08844

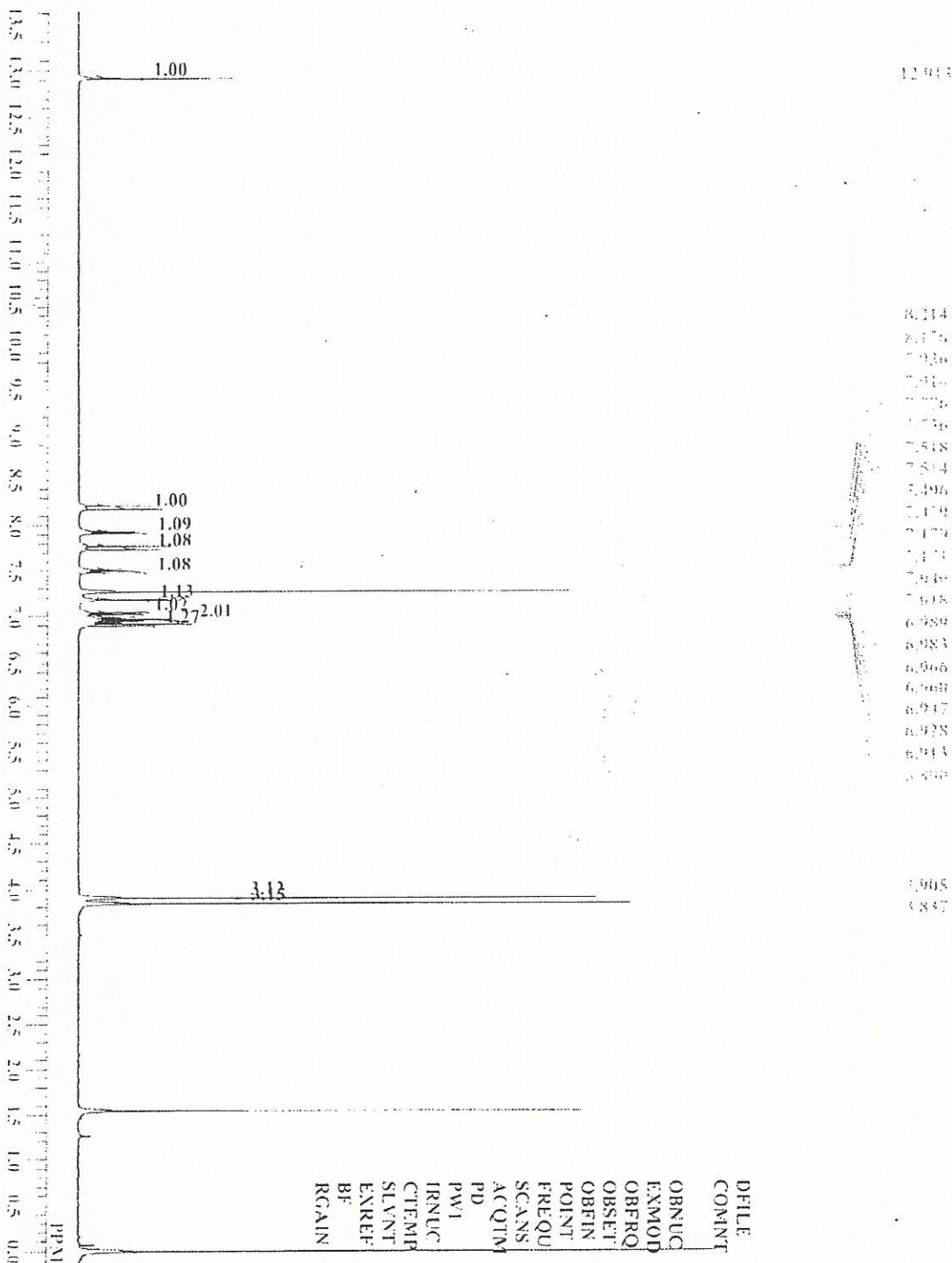


Catalog No.: 19-813
 Product Name: 2,5-Dimethoxy-2'-hydroxychalcone
 Lot No.: 1611927

2,5-DM-2-HC 1H NMR CDCl3

Analysed By: SPM

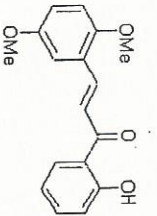
13.85 13.40 12.5 12.0 11.5 11.0 10.5 10.0 9.5 9.0 8.5 8.0 7.5 7.0 6.5 6.0 5.5 5.0 4.5 4.0 3.5 3.0 2.5 2.0 1.5 1.0 0.5 0.0



DEFILE	2,5-DM-2-HC 1H.nls
COMINT	2,5-DM-2-HC 1H NMR CDCl3
OBNUC	1H
EXMOD	NON
OBFRQ	399.65 MHz
ORSET	124.00 KHz
OBFIN	10500.00 Hz
POINT	16384
FREQU	10000.00 Hz
SCANS	32
ACQTM	1.6384 sec
PD	2.0000 sec
PW1	7.50 usec
IRNUC	1H
CTEMP	6348.8 c
SLVNT	CDCl3
ENREF	0.00 ppm
BF	0.30 Hz
RGAIN	24



INDOFINE Chemical Company, Inc.
121 STRYKER LANE
BLDG. 30, SUITE 1
HILLSBOROUGH, NJ 08844

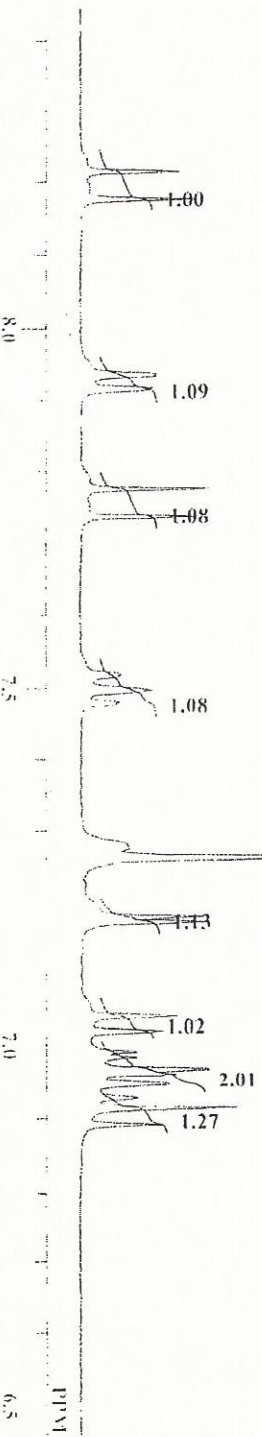


Catalog No.: 19-813
Product Name: 2,5-Dimethoxy-2'-hydroxychalcone
Lot No.: 1611927

2,5-DM-2-HC 1H NMR CDCl3

Analysed By: SPM

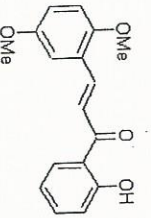
Chemical Shift (ppm)	Integration
8.178	1.00
8.171	1.09
8.164	1.08
8.157	1.08
8.150	1.02
8.143	2.01
8.136	1.27
8.129	
8.122	
8.115	
8.108	
8.101	
8.094	
8.087	
8.080	
8.073	
8.066	
8.059	
8.052	
8.045	
8.038	
8.031	
8.024	
8.017	



DFILE 2,5-DM-2-HC 1H.a1s
COMNT 2,5-DM-2-HC 1H NMR CDCl3
OBNUC 1H
EXMOD NON
OBFRO 399.65 MHz
OBSET 124.00 KHz
OBFIN 10500.00 Hz
POINT 16384
FREQU 10000.00 Hz
SCANS 32
ACQTMI 1.6384 sec
PD 2.0000 sec
PWI 7.50 usec
IRNUC 1H
CTEMP 6348.8 c
SLVNT CDCl3
ENREF 0.00 ppm
RF 0.30 Hz
RGAIN 24



INDOFINE Chemical Company, Inc.
 121 STRYKER LANE
 BLDG. 30, SUITE 1
 HILLSBOROUGH, NJ 08844

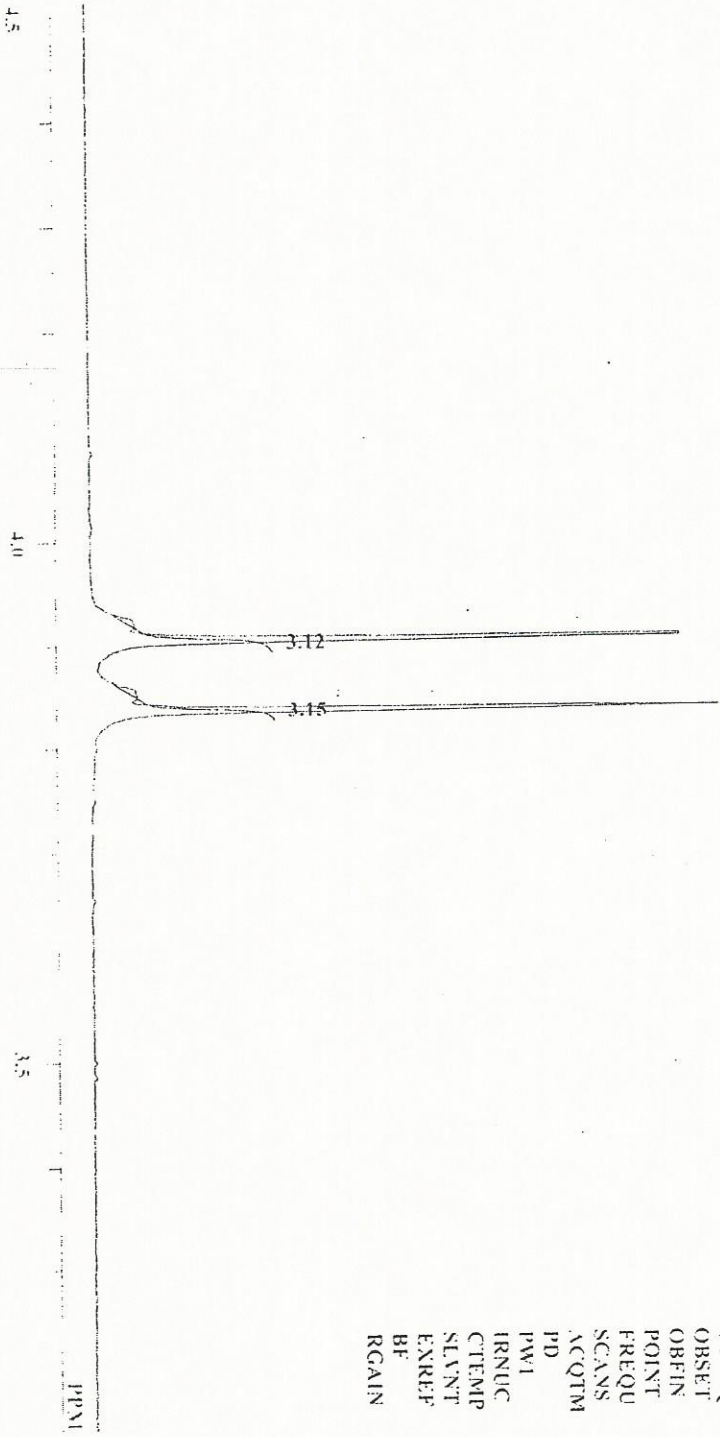


Catalog No.: 19-813
 Product Name: 2,5-Dimethoxy-2'-hydroxychalcone
 Lot No.: 1611927

2,5-DM-2-HC 1H NMR CDCl3

Analysed By: SPM

508
283



DFILE	2,5-DM-2-HC 1H.a1s
COMNT	2,5-DM-2-HC 1H NMR CDCl3
OBNUC	1H
EXMOD	NON
OBFRQ	399.65 MHz
OBSET	124.00 KHz
OBFIN	10500.00 Hz
POINT	16384
FREQU	10000.00 Hz
SCANS	32
ACQTM	1.6384 sec
PD	2.0000 sec
PWL	7.50 usec
IRNUC	1H
CTEMP	6348.8 c
SLVNT	CDCl3
EXREF	0.000 ppm
BF	0.30 Hz
RGAIN	24